

# Life at St. Andrew

[gostandrew.com](http://gostandrew.com)

## Care

[gostandrew.com/support](http://gostandrew.com/support)

Our prayers are with those impacted by fires in North and South Carolina.

## Coming Up

[gostandrew.com/lent](http://gostandrew.com/lent)

### UW Faith Unit Gathering

**Today | 11:45 am – 2 pm**

Guest Speakers: St. Andrew Earth Keepers  
[gostandrew.com/events](http://gostandrew.com/events)

### Big Ticket Items Auction

**Today | 2 pm | Livestream**

Bid on big ticket auction items using this special link: [gostandrew.online.church](http://gostandrew.online.church)

### Lenten Study: *Living Into Lent*

**Sundays through April 13 | 6:30 pm**

**(March 30 class will meet at 4 pm) | Virtual**

**Thursdays through April 17 | 1 pm | In Person**

[gostandrew.com/studies](http://gostandrew.com/studies)

### Carnival Youth Auction Kickoff

**April 6 | 8 am – 12 pm | Youth Zone**

[gostandrew.com/youth](http://gostandrew.com/youth)

### Methodism 101 – Virtual Class

**Tuesdays April 8–22 | 6:30–8 pm**

[gostandrew.com/studies](http://gostandrew.com/studies)

### Prime Time

**Friday, April 11 | 11:30 am – 1 pm**

Register by April 8 at 303-351-0096.

[gostandrew.com/seniors](http://gostandrew.com/seniors)

### Blood Drive

**Good Friday, April 18 | 1–5 pm**

[gostandrew.com/events](http://gostandrew.com/events)

### Big Serve – 10 Years Strong!

**Saturday, May 3 | Times vary**

[gostandrew.com/bigserve](http://gostandrew.com/bigserve)

March 30, 2025

## Words for Meditation

“There’s no such thing as perfect. There is only the long and patient struggle to love all that is imperfect into wholeness.”

~ Rev. Mark Feldmeir

## Scripture

Luke 15:1–3, 11–32

## Today’s Questions

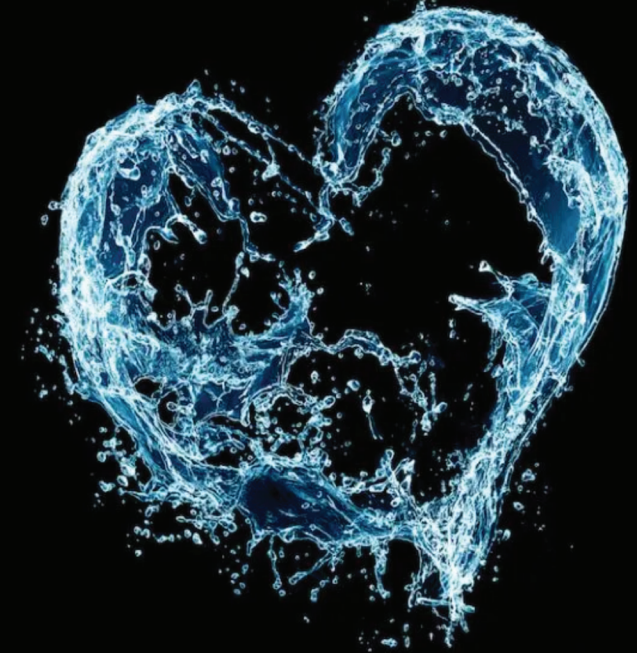
1. In the story, do you identify more with the “prodigal son” or the “older brother”?
2. Do you agree or disagree that life must lead us to the edge of our own resources before we can ever find our home in God? Have you ever been led to, and through, experiences or situations that you could not fix or control or understand? If so, what did you discover about yourself, God, and your faith?

## Today’s Takeaways

1. There is no such thing as \_\_\_\_\_.
2. God’s struggle, and ours, is to love all that is \_\_\_\_\_ into \_\_\_\_\_.
3. God throws \_\_\_\_\_ for \_\_\_\_\_ people.

## Today’s Notes

Today’s service is available on YouTube at [gostandrew.com/online](http://gostandrew.com/online).



# The Beautiful Empty

March 30, 2025

# St. Andrew

*Our Vision:* Bringing more love, justice and community into the world.  
*Our Mission:* To love God with our heart, soul, mind and strength, and to love our neighbors as ourselves.

## Lenten Sermon Series

### *The Beautiful Empty: Lent 2025*

Blaise Pascal once spoke of the “God-shaped vacuum” in the heart of every person that can only be filled by God. Yet we spend so much of our lives trying to fill that vacuum with everything but God. When we feel worthless, we seek validation from our work. When we suffer from loneliness, we turn to relationships to save us. When we experience boredom, we binge on entertainment. When we feel overwhelmed or self-conscious, we reach for altered states.

The God-shaped hole only grows deeper and wider as we fill it with the things that do not satisfy. But the season of Lent invites us to let go of our attachments and dependencies, emptying ourselves of all our cheap substitutes for God, so we can finally see ourselves for who we really are—needy, imperfect, unfinished, still-becoming people in need of a tender, patient, gracious God. It’s only by experiencing our emptiness that the God-shaped hole can finally be filled, healed, and blessed by that which truly satisfies.

March 9 • *Power* (Luke 4:1–13)

March 16 • *Desire* (Philippians 3:17–4:1)

March 23 • *Pride* (Luke 13:1–9)

March 30 • *Perfection* (Luke 15:1–3, 11–32)

April 6 • *Calculation* (John 12:1–8)

April 13 • *Admiration* (Luke 19:28–40)

## Sign In & Give



Use this QR code to make your online contribution to support the many ministries of St. Andrew. Thank you for your efforts and generosity!

**Sign in online** to let us know you’re worshipping with us today.  
[gostandrew.com/maincampus](https://gostandrew.com/maincampus)



# You Belong *Here.*

St. Andrew is an open, affirming, inclusive congregation that welcomes saints and sinners, believers and skeptics, the lost and the found, the wonderers and the wanderers, families of all shapes and sizes, and people from every point along life’s journey.

**No matter who you are, where you’ve been, what you believe, or whether you even believe at all, you are welcome here.**

We embrace the message of Jesus that everyone is loved by God and affirm that all persons are of sacred worth. Regardless of your age, race, ethnicity, sexual orientation, gender identity, education, marital status, physical and mental capacities, or faith history—you belong here. Just as you are.

**Welcome home.**

## Worship Team

Rev. Mark Feldmeir – Senior Pastor

Rev. Amy Stapleton – Executive Pastor

Rev. Jerry Butler – Pastor of Education and Formation

Rev. Barb Sholis – Pastor of Senior Adult Ministries | Wind Crest

Mark Zwilling – Director of Music and Arts

Larry Scalfari – Associate Director of Music

Justin Bullis – Director of Contemporary Music

Carlee Andrus – Director of Hospitality and Community Life

Micah Besaw – Production

## Connect with Us

9203 S. University Blvd.  
Highlands Ranch, CO 80126

[info@gostandrew.com](mailto:info@gostandrew.com)

Church Office: (303) 794-2683

## Worship Gatherings

### Sundays:

Chapel Service 8 am

Sanctuary 9 & 10:30 am  
and Livestream

## Digital Connection

**Website:** [gostandrew.com](https://gostandrew.com)



@gostandrew

### Online Worship:

[gostandrew.com/online](https://gostandrew.com/online)

**Podcast:** StAndrewUMC

**Contact Us:** [gostandrew.com/contact](https://gostandrew.com/contact)



Scan to receive emails about what’s happening around St. Andrew.